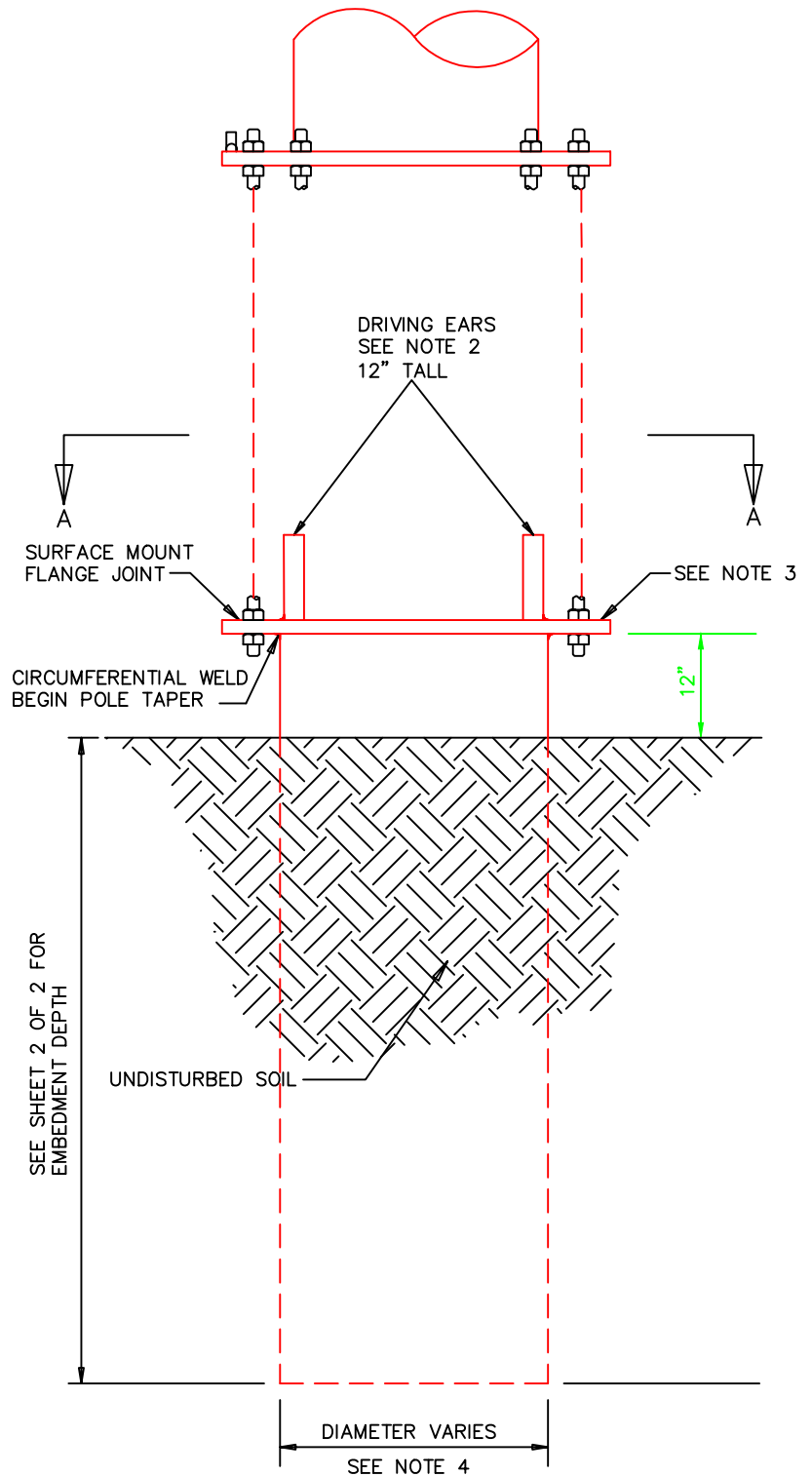



SECTION A-A
N.T.S



NOTES:

- VIBRATORY POLE BASE TO BE INSTALLED USING VIBRATORY HAMMER, THE FREQUENCY AND STROKE AMPLITUDE RANGES FOR INSTALLATION OF THE POLE BASE TO BE PER MANUFACTURERS RECOMMENDATIONS.
- MANUFACTURER SHALL DETERMINE ADEQUATE SIZE OF DRIVING EARS.
- FLANGE SIZE AND BOLT PATTERN TO BE DETERMINED BY MANUFACTURER. BOLT PATTERN OF POLE TO MATCH BOLT PATTERN OF FOUNDATION FLANGE JOINT.
- VIBRATORY BASE DIAMETERS AND DEPTHS SHOWN ON SHEET 2 OF 2 ARE MINIMUM. POLE MANUFACTURER IS TO VERIFY VIBRATORY POLE BASE IS ADEQUATE FOR DESIGN LOADS.

DWG. REF.	LIST OF MATERIALS				GREENVILLE UTILITIES COMMISSION GREENVILLE, NORTH CAROLINA				
	ea.	DESCRIPTION	ITEM	DET.					
	1	VIBRATORY POLE BASE, FLANGE MOUNT	-			VIBRATORY DRIVEN POLE BASE FLANGE TYPE			DWG. NO. TMF-VPB-F
					DWN. JLS CKD. KW SCALE: N.T.S.	DATE: 05/01/2020 APPD. KW SHEET: 1 OF 2			
					DATE REVISION	DATE REVISION			