

Greenville Utilities Commission
Greenville, North Carolina
Questions and Answers I for RFB 22-20, Due 03.31.2022 at 3:00 pm

1. I have re-logged this quote under 539157. Could you confirm if anything changed with the engineered poles between RFB 22-07 and this one? Just want to save our engineers some time if engineered poles haven't changed.

Answer: Engineered poles have not changed since **Addendum 1** of RFB 22-07. Also see Question 4 and 10 below.

2. Would you consider an alternate bid using laminated Wood structures?

Answer: We will only accept galvanized steel structures for this bid.

3. The new pole details are quite same as per the old specification and drawing. With the new specification, we received the PLS LCA (loading) files which are matching old LCA files which we have used for the pole design. This means the loading given in the LCA files are Not matching with loading mentioned in the specification drawings.

Answer: The LCA files were provided as additional information from the preliminary design models. Vendor must ensure that design meets or exceeds the loads shown on the **drawings**. See question 10 below.

4. As this is the final tender bid proposal, I think we must check & confirm from End client/customer about exact requirement. Can you please check and clarify this point? We noticed the pole quantity has changed from the previously advertised 22-07. Would it be possible to confirm which pole types have changed from the previous RFQ. There are 163 LCA files associated with 22-20 many are probably the same as previously reviewed. CHM is asking if GUC would be able to identify which LCA files are new. This is an effort to aid in the engineering required.

Answer: Total pole quantity (163) has not changed since RFB 22-07. In Addendum 1 of RFB 22-07 5 structures we changed from WPE to Engineered structures. These 5 structures are as listed: 8, 55, 56, 75, & 85. RFB 22-20 and the LCA files released reflect these updates.

5. If we originally submitted a bid bond on the last quotation, is the expectation that we need to provide a new one with this new quotation?

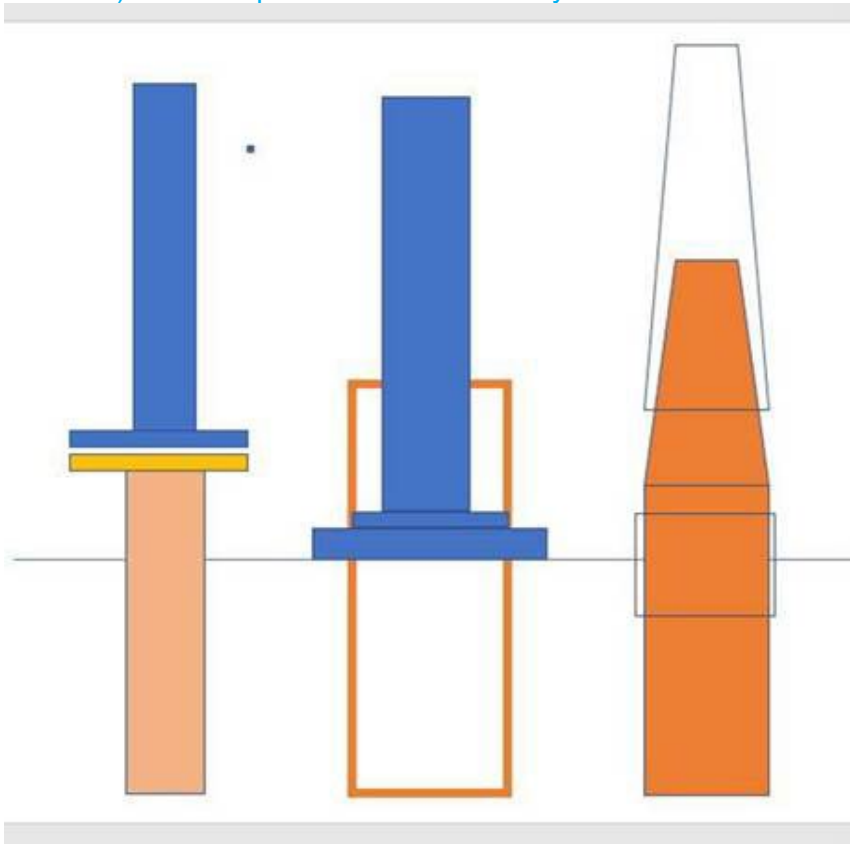
Answer: Yes, a new original bid bond should be provided.

6. RFQ package is missing .bak files for structures 8, 55,56,75 & 85. Please provide .bak files and/or drawings with loading.

Answer: See attached .zip file for structures 8, 55, 56, 75, & 85.

7. WPE shows Vibratory caissons but no details were provided, see below for options for caissons. Pricing varies significantly between options shown below so need GUC to choose an option they intend on using on this project.

- 1) Base plated steel Vibratory caisson
- 2) Socket type steel vibratory caisson
- 3) Slip Jointed steel vibratory caisson

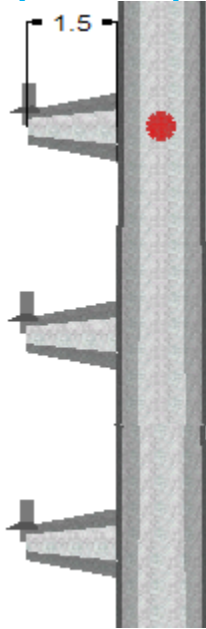


Answer: Per Section II.5.a.4 of RFB 22-20, "Bolted flange joints shall be used for medium angle and heavy angle guyed structures, cross-braced H-Frames, and structures in uplift." All other structures shall be slip joint.

8. Caisson diameters are listed as preliminary on structure list, can we take these listed preliminary caisson diameters as min. required diameters?

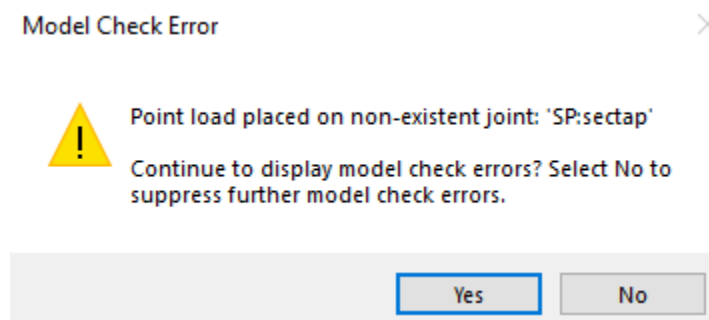
Answer: Yes, this is the minimum caisson diameter at the provided length. This is based on our best estimate and the maximum base moment. If the caisson diameters are smaller than what the vendor has for structure diameter, the caisson diameter can be increased. Vendors should note any change to caisson diameters in their bid.

9. We don't have drawings for WPE structures, some WPE .pol files have davit arms (ENG-DE-DistJumper Bracket) that , we believe GUC is procuring from other sources and is out of scope for this bid. If we have to provide these arms then GUC needs to provide loading to design these arms. We are unable to verify structural adequacy of WPE class poles selected by GUC. Meyer quote will be based on WPE class selected by GUC.



Answer: These davit arms will be procured by GUC and is out of the scope for this bid.

10. We see errors when using furnished .lca files with corresponding .pol file. For example : .pol file for ...H6_STR-137-NEW and loading 137.138.lca was not able to be recognized due to point loads placed on non-existent joints. Hence, we are using the loading table provided on framing drawings for all engineering poles. Except for Structures 8, 55, 56, 75 & 85 once .BAK is provided. Please confirm.



Answer: See attached spreadsheet for Structure numbers and their corresponding pole file name.